

Register today!

To stay connected to the Riverside family and receive updates on latest news and events



rsalumni@live.com.sg



[rsalumniofficial](https://www.instagram.com/rsalumniofficial)



[Riverside Secondary School Alumni \(RSAlumni\)](https://www.facebook.com/RiversideSecondarySchoolAlumni)

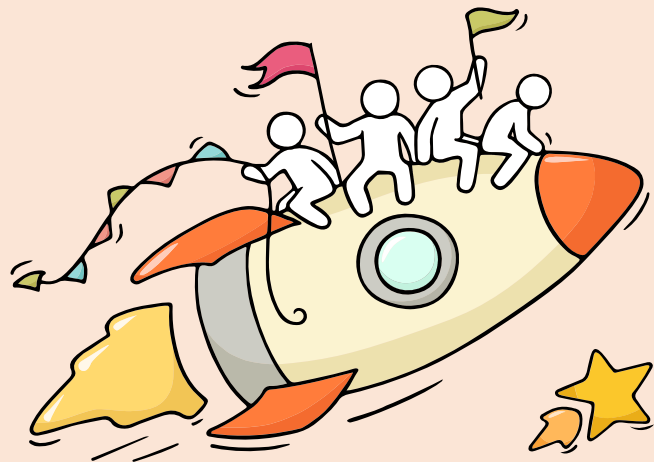
Welcome Back!

Briefing Slides for Release of 2024 GCE O-Level Results



Dear students,

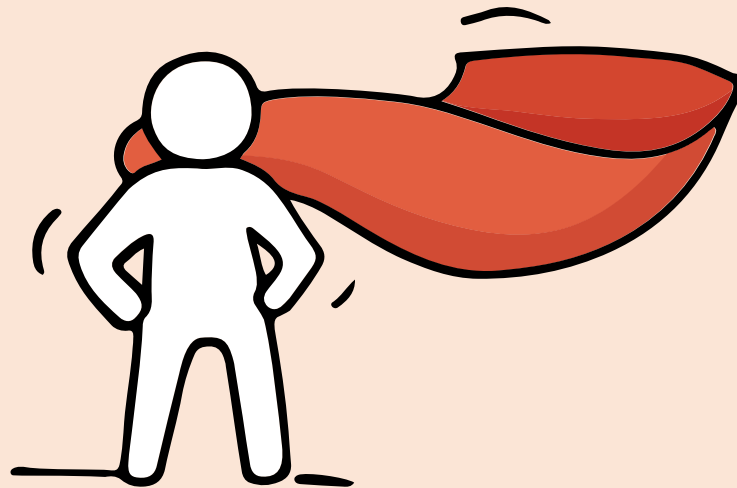
You have worked hard to reach this stage. Let's celebrate our efforts!



Finally, we are about to receive our results!



Remember that while **everyone's educational journey is different, we can each have a fulfilling outcome!**



Thinking about Your Next Step?

Consider these questions!

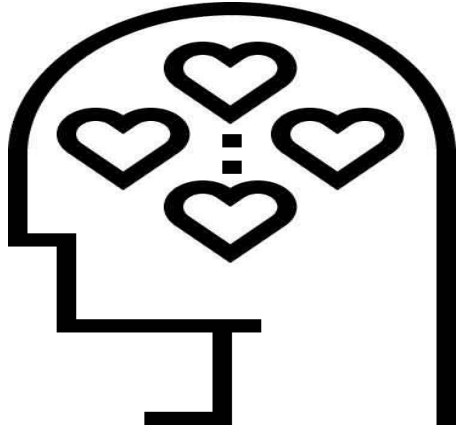
Where do I want to go?

Who am I?

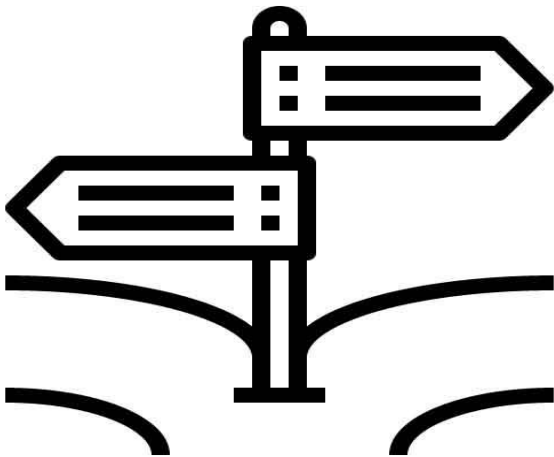


How Do I Get There?

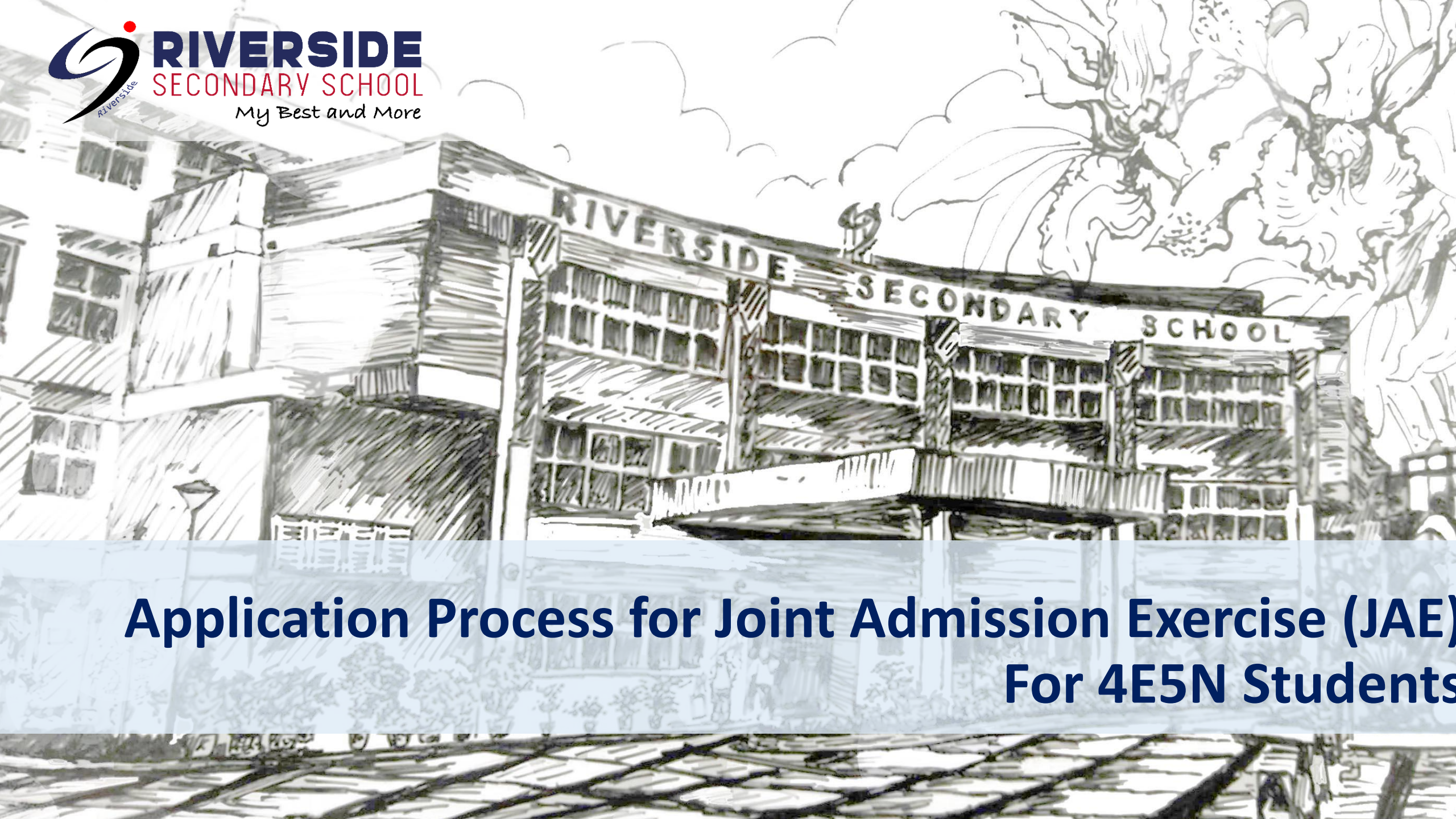
Release of O-Level Results



- **What am I good at? Are there areas that I am interested in?**
 - Think about type of courses you have strengths and are interested in
 - For example, you may be interested in engineering, healthcare or design courses



- **Where should I go?**
 - List down all the institutions that offer courses that are aligned to your interests
 - For example, if you are interested in design, you could list down the design courses offered by the polytechnics, such as the Diploma in Immersive Media, offered by NP or Diploma in Sonic Arts, offered by RP. You can also consider courses offered by ITE such as the Higher Nitec in Interactive Design or the Higher Nitec in Visual Effects.



Application Process for Joint Admission Exercise (JAE) For 4E5N Students

Pathway and Eligibility Criteria

Admission Exercise	Institutions	Pathway	Eligibility Criteria
JAE	JC	2-yr A Level or IB Diploma	Gross L1R5 ≤ 20 + Grade Requirements
	MI	3-yr A Level	Gross L1R4 ≤ 20 + Grade Requirements
	Polytechnic	3-yr Diploma	Net ELR2B2 ≤ 26* + Min. Entry Requirements
	ITE	2-yr <i>Higher Nitec</i>	Sat for at least 5 'O' Level subjects over a max. of 2 years + Min. Entry Requirements



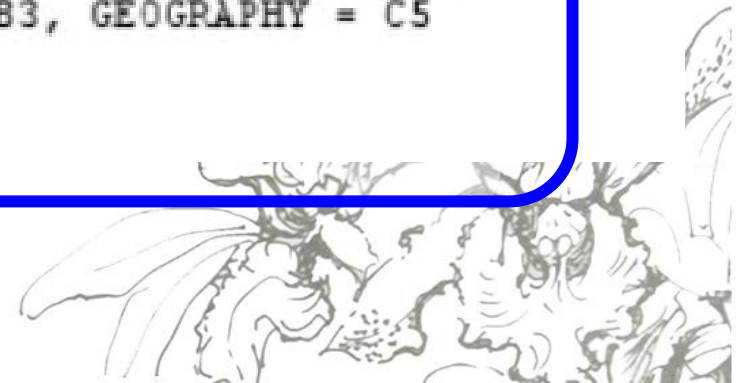
Understanding Form A

Subjects and grades used in computing your aggregate scores

You will find your O-Level examination results used to compute the aggregate scores. Your CCA grade will also be indicated here:

Your 20XX GCE O-Level Examination results:

ENGLISH LANGUAGE = A2, MALAY = B3, MATHEMATICS = C6, SCIENCE (CHEMISTRY & BIOLOGY) = B3,
PRINCIPLES OF ACCOUNTS = B3, HUMANITIES (SOCIAL STUDIES, HISTORY) = B3, GEOGRAPHY = C5
CCA = EXCELLENT



Understanding Form A

Aggregate scores for JC, MI, polytechnic and ITE

These are the **gross** aggregate scores, excluding bonus points:

Your gross aggregate scores (without bonus points):

JC	MI	Polytechnic				ITE		
L1R5	L1R4	ELR2B2-A	ELR2B2-B	ELR2B2-C	ELR2B2-D	ELB4-A	ELR1B3-B	ELR2B2-C
19	14	14	17	17	17	14	14	17



Understanding Form A

Eligible courses to apply for

These are courses where you met the admissions criteria to apply. However, a place in the course is not guaranteed as posting is based on merit (net aggregate score, i.e. minus bonus points), choices, and vacancies.

JC and MI courses

If you met the admission criteria for JC and MI, your Form A will state that you are eligible to apply for all JC and MI courses:

JC/MI:

You are eligible for all JC/MI courses.



Understanding Form A

Polytechnic courses

Polytechnic courses for which you met the minimum entry requirements are listed here. The course codes begin with C, N, R, S or T, representing specific polytechnics, followed by two numbers:

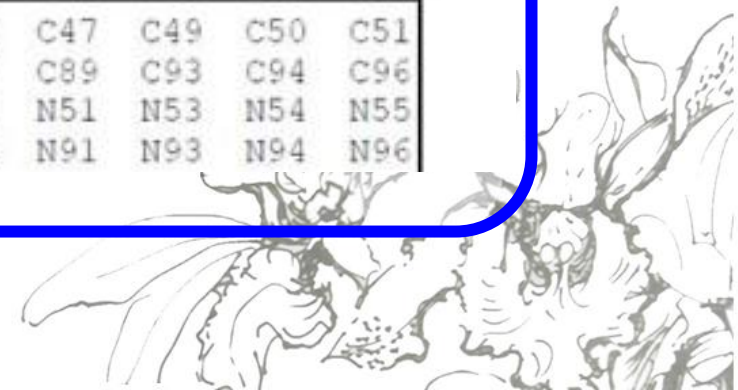
ITE courses

ITE courses for which you met the minimum entry requirements are listed here. The course codes start with V, followed by two numbers:

Polytechnic/ITE:

C- Nanyang Polytechnic, N- Ngee Ann Polytechnic, R- Republic Polytechnic, S- Singapore Polytechnic, T- Temasek Polytechnic
V- Institute of Technical Education

C27	C28	C29	C30	C31	C32	C34	C35	C36	C38	C41	C42	C43	C45	C46	C47	C49	C50	C51
C52	C54	C62	C65	C67	C69	C70	C71	C72	C73	C75	C80	C81	C85	C87	C89	C93	C94	C96
C97	C98	N11	N12	N13	N14	N15	N40	N41	N42	N43	N44	N45	N48	N50	N51	N53	N54	N55
N56	N57	N59	N60	N65	N67	N69	N71	N72	N73	N74	N81	N82	N83	N85	N91	N93	N94	N96



Important Dates for JAE Application

Application Window

Start

End

10 Jan 2025, 4pm

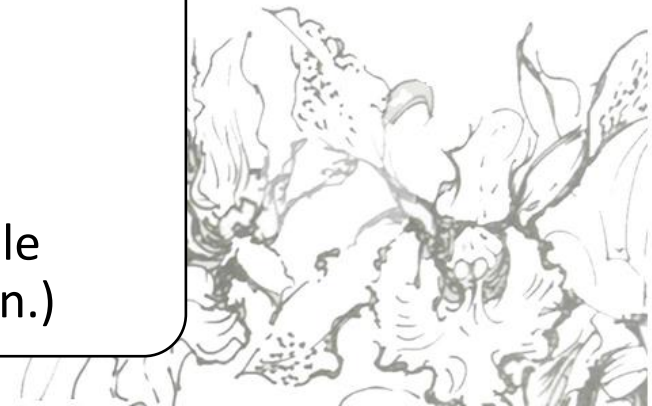
15 Jan 2025, 4pm

Posting Results

4 Feb 2025, 9am (Tentative)

Posting Outcomes

- 1. JAE-IS**, accessible through the JAE website at [www.moe.gov.sg /jae](http://www.moe.gov.sg/jae)
- 2. Short messaging system (SMS)** via applicant's mobile number (if provided by applicant during JAE registration.)



JAE Posting Procedures

JC/Millennia Institute

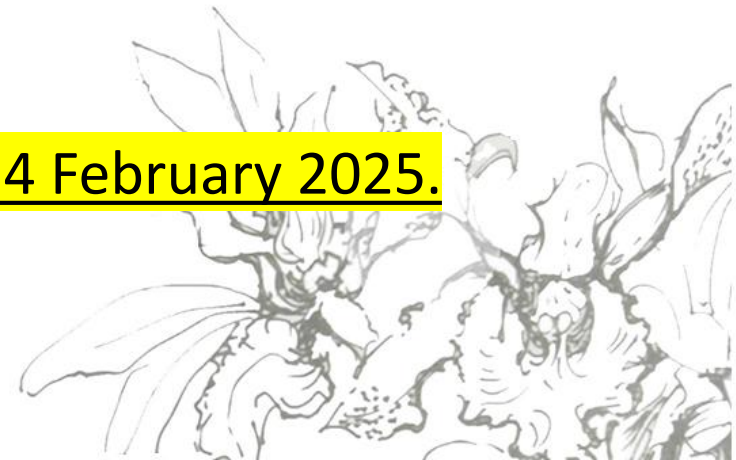
- Report to JC/MI on the Wednesday, 5 February 2025.
- Failure to report will result in forfeiture of place.

Polytechnic

- Will receive an enrolment package by end Feb 2025.

ITE

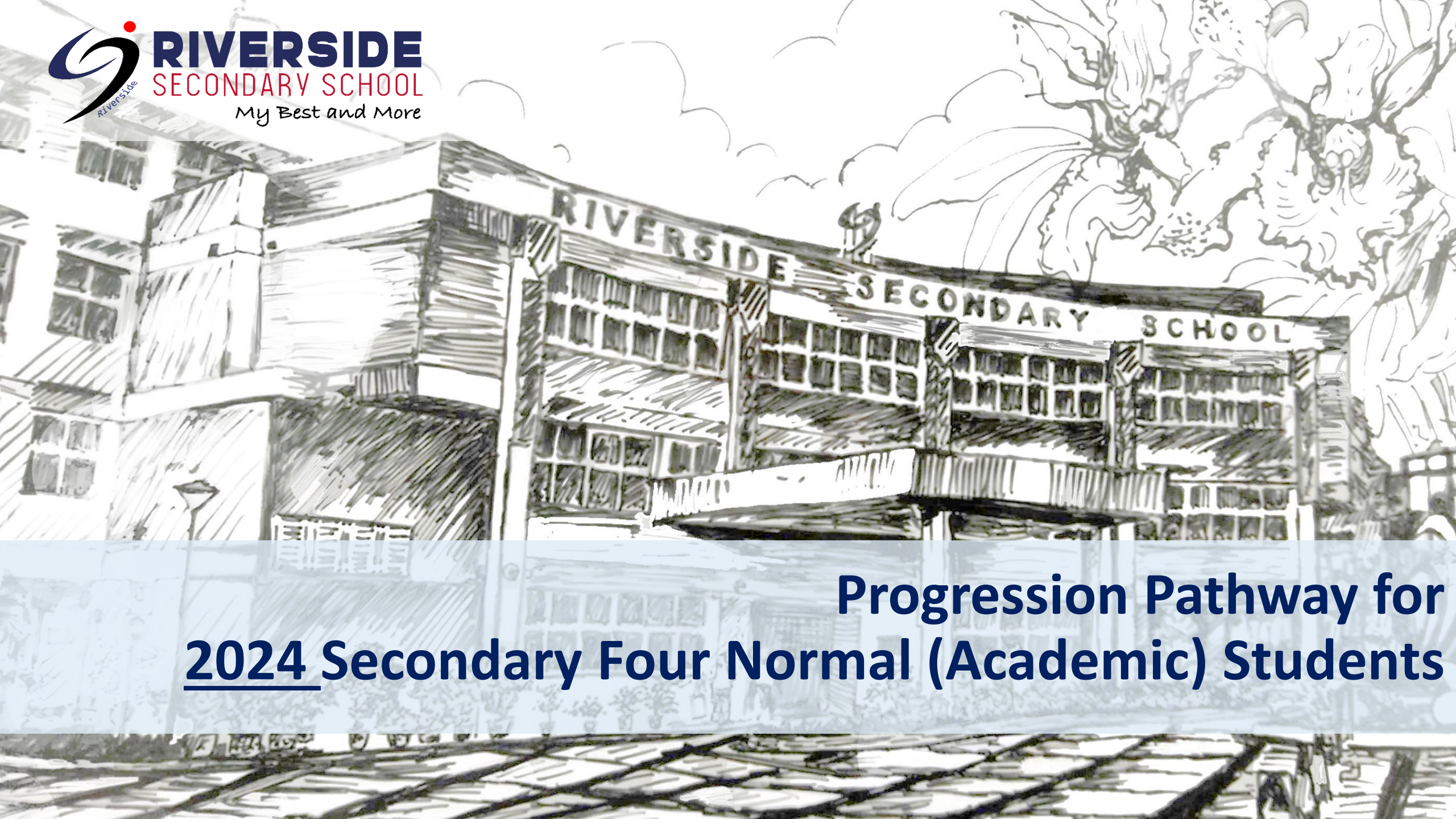
- Will receive an email with enrolment instructions on Tuesday, 4 February 2025.
- Acceptance of offer is done online at **www.ite.edu.sg.**
- Failure to do so would be forfeiture of place.



Successful DSA-JC students

- ❑ **Successful DSA-JC students** are **not eligible** to participate in JAE. You are expected to honour your commitment to the DSA-JC school and participate in activities related to the talent selected in, for the duration of the programme that you are admitted to.



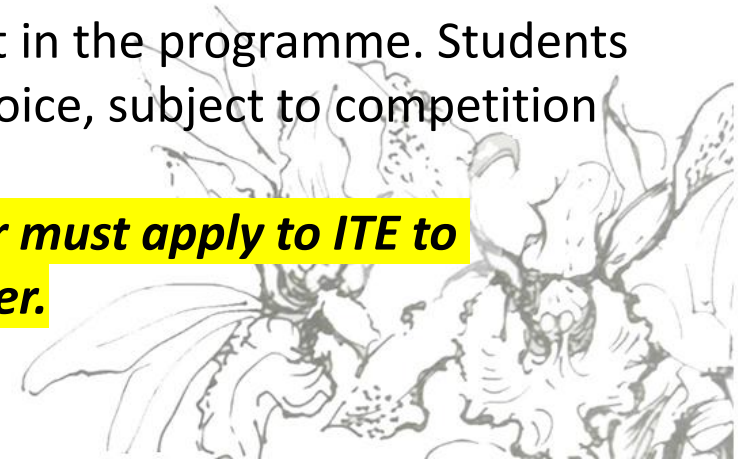


**Progression Pathway for
2024 Secondary Four Normal (Academic) Students**

Important Dates for PFP

Event	Date
O Level Release of Results	10 Jan 2025
Application Period	10 Jan (1.30pm) to 15 Jan 2025 (4pm)
Posting Results	22 Jan 2025 (1.30pm)
Acceptance of Posting/Appeal	22 January (1.30pm) to 27 January 2025 (4pm)
Outcome of Appeal	5 February 2025 (1.30pm)
Acceptance of Appeal Outcome	5 February (1.30pm) to 7 February 2025 (4pm)

1. Students who reject their PFP offer will be required to continue to report their secondary schools on to continue Secondary 5.
2. Please note that eligibility to apply for PFP does not guarantee placement in the programme. Students placed on the PFP may or may not be posted to the course of his / her choice, subject to competition based on merit and the availability of places.
3. ***Students who accepted a place in DPP but decided to take up a PFP offer must apply to ITE to withdraw from the DPP first, before they are able to take up the PFP offer.***
4. More details on the PFP can be found at <https://pfp.polytechnic.edu.sg/>



Direct-Entry-Scheme to Polytechnic Programme (DPP)

- ❑ More information on the DPP can be found at www.ite.edu.sg/admissions/full-time-courses/higher-nitec/dpp/.
- ❑ 2024 Secondary 4 N(A) students who **are newly eligible** after taking into account their O-Level examination results should submit their DPP applications online via the DPP application portal at www.ite.edu.sg/apply-for-ite-courses.



Important Dates for DPP

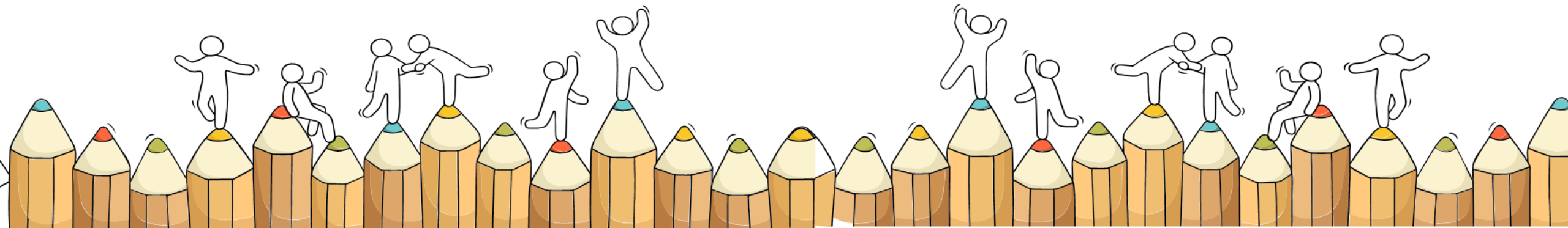
Event	Date
Final Application Phase	10 Jan (2pm) to 14 Jan 2025, (11.59pm)
Release of Application Results	17 Jan (9am)
Acceptance Offer	17 Jan (9am) – 21 Jan 2025 (11.59pm)

For more information on ITE application:

- <https://www.ite.edu.sg/apply-for-ITE-courses/dpp>



Support



RSS ECG Counsellor

For today, you can speak to Ms Yong Hui Ling, ECGC

Make an appointment to speak with ECG Counsellor in school or via <https://go.gov.sg/riversidebooking2024>

Ms Li Minyi

ECG Counsellor

Riverside Secondary School



Mondays & Wednesdays
@ Riverside Secondary School
Venue: Student Hub
Email: li_Minyi@moe.edu.sg



Concerned About Your Next Step?

Stop

- Calm yourself down. Take a few deep breaths.

Think

- Think through the different options that are available for you. Keep things in perspective.
- Remember that the O-Level is one part of your life journey and not the destination.

Do

- Approach a trusted adult and seek his/her help. Have a conversation with this person about what would be best for you.
- Make a decision and take action based on your options.

When you receive your results, you may experience a range of emotions.

Managing these emotions well will allow you to stay calm and make rational decisions.

Keep a lookout for some of these signs in your peers or yourself.

How can we support one another?



D

Deliberately avoiding others

I

Increased irritability, restlessness, agitation, stress and anxiety

S

Sending or posting moody messages on social media

T

Talking about death or dying

R

Reacting differently or gradually losing interest in things they used to like

E

Eating more than usual or having a much reduced appetite

S

Sleep pattern changes with difficulty falling asleep or oversleeping

S

Slowing down of energy levels

If you notice any of these signs in yourself or your friends,
have a chat with your school counsellor or teacher
Or contact SOS 24-hour hotline at **1-767** or **1800-221-4444**

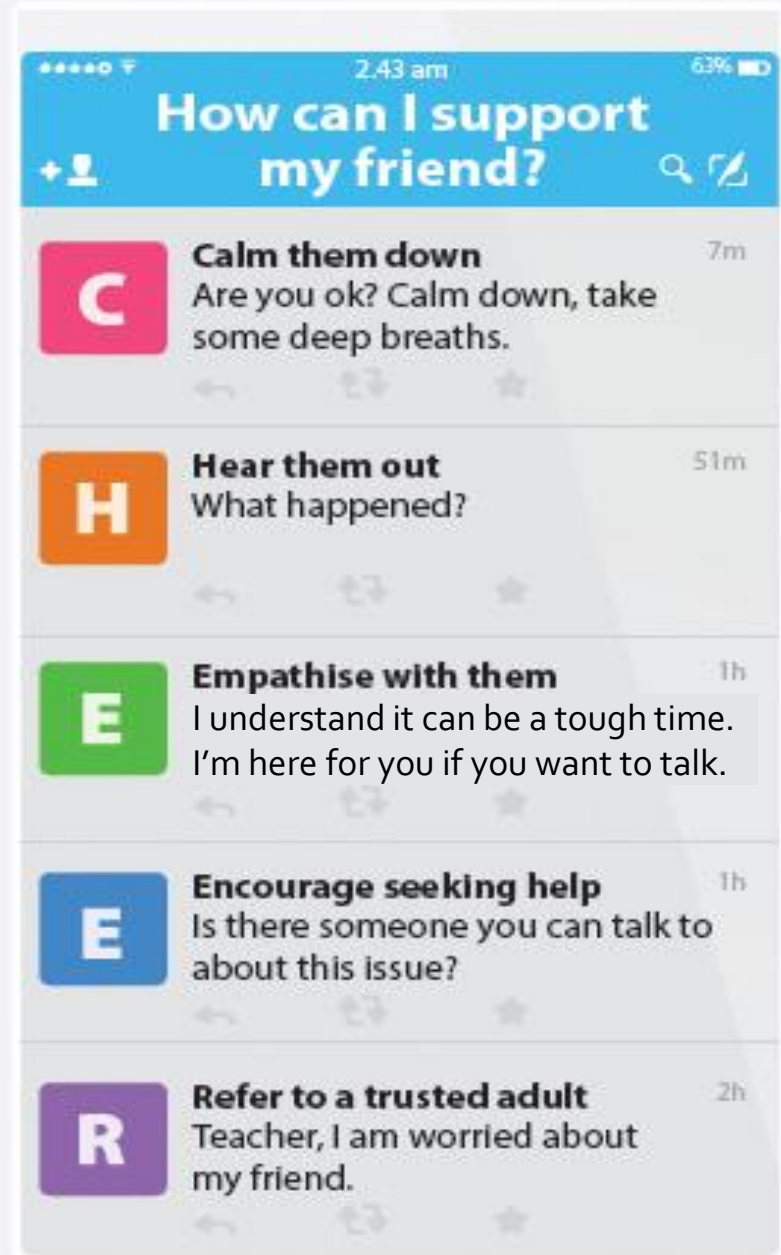


Supporting Your Friend

We may each experience different emotions upon receiving the results. You can share your friends' joy by congratulating them or give words of encouragement to friends who may be disappointed with their results.



Keep a lookout for your friends in distress. You can support them in the following ways:



Support is readily available for you.

There are other hotlines and chats available if you are more comfortable seeking help using these platforms. These can also be found in the infographic which you accessed earlier.



SOS provides round-the-clock emotional support for those in distress, thinking of suicide or affected by suicide.

Call: **1767**
(24-hour helpline)

Whatsapp: **9151 1767**
(24-hour Care Text)

TOUCHline is a helpline to provide youths with emotional support and practical advice.

Call: **1800-377 2252**

*Monday- Friday (Excluding Public Holidays):
9am – 6pm*

Community Health Assessment Team

(CHAT) provides personalised and confidential mental health checks and consultation for youths. To speak with a youth support worker, you can:

Visit: **CHAT Hub at *Scape, 2 Orchard Link, #04-01A**

Call: **6493 6500/ 6501**

Email: **CHAT@mentalhealth.sg**

Carey is an online platform by Care Corner that provides free mental health check-ins with mental health professionals. Find out more at:
<https://carey.carecorner.org.sg/>

mindline.sg is an online platform that provides tools, tips and resources to help you manage your health and well-being. Find out more at:

www.mindline.sg



eC2 is an e-Counselling Centre where you can talk to a trained counsellor about the issues you are facing, right where you are.

Chat with a counsellor at:

www.ec2.sg

*Monday – Friday (Excluding Public Holidays):
10am – 12pm & 2pm – 5pm*



**The O-Level
examination is not
the end point.**

**It is part of your
education journey.**

All Students to Note



When you receive your results slips...

- Check that your personal particulars (such as statutory names and Hanyu Pinyin names) are printed correctly on your result slips/certificate.
- Please see [Mr Alvin Cai \(YH/US\)](#) by [today before 4 pm](#) if any of your personal particulars need to be amended.



Appeal for Transfer

- You may appeal for a transfer to another course or institution **only after the release of the posting results.**
- For a transfer to another JC or MI, approach the JC or MI directly.
- For a transfer to another poly course, do so within 3 working days, by applying online at www.polytechnic.edu.sg.
- For a transfer to a ITE, do so within 5 working days, by applying online at www.ite.edu.sg.



REMINDER!

Post-Secondary Intentions	Apply By	Apply Through
JC/MI	15 Jan 2025 (4pm)	Submit your application through the JAE Internet System (JAE-IS) using your Singpass or alternatively, the JAE PIN
Polytechnic		
ITE (DPP)	14 Jan 2025 (11.59pm)	For PFP, through PFP portal For DPP, through DPP portal



Resources



Resources to support you as you receive your results

Receiving your results and making decisions about your post-secondary pathways can be exciting to some, but stressful to others.

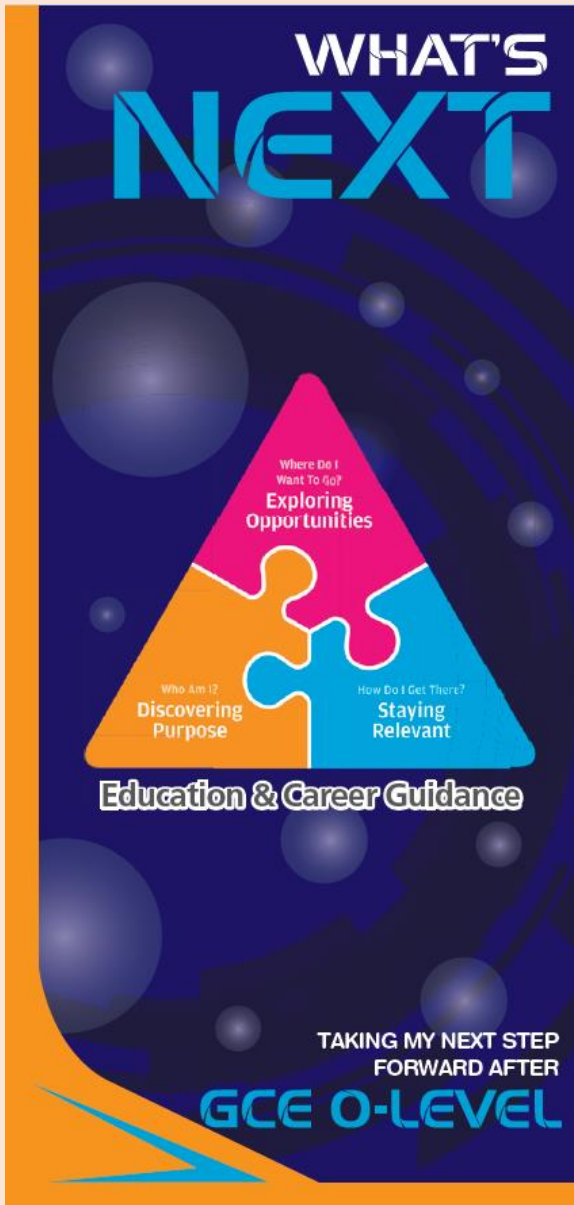
Scan this QR code for an infographic with some helpful resources to support you.



<https://go.gov.sg/olevelstudentresource>



Resources to help you make informed decisions



PLANNING YOUR NEXT STEP

These resources will help you chart your path ahead:



• What's Next Brochure

<https://go.gov.sg/whats-next-olevel>



• Contact the ECG Centre @ MOE

<https://go.gov.sg/moe-ecg-centre>



• MySkillsFuture Student Portal

<https://go.gov.sg/MySFSec>



• Chat with your school's ECG Counsellor



MySkillsFuture Student Portal

Use the information and tools to explore various education and career pathways and take charge of your future.

Resources to help you make informed decisions

Information on Post-Secondary Education

Learn more about the admissions exercises and programmes



<https://moe.gov.sg/post-secondary/admissions>

Learn more about the post-secondary education institutions



<https://moe.gov.sg/post-secondary/overview>

About Discover On My Way (D:OMW)

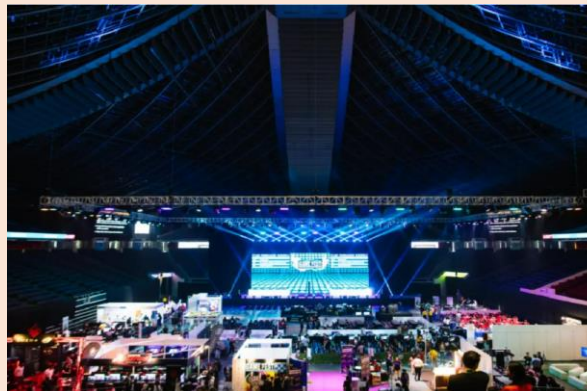
Discover your education and career interests and chart your personal and professional future with **Discover On My Way!** Explore different careers, connect with industry professionals and peers, and get firsthand exposure at various job roles. Let's get you on your way to discovering!

[Join Programmes!](#)

We know – deciding on which course to take and what career to pursue isn't easy... Through programmes organised by NYC and our partners, you'll be able to meet professionals from various industries and youth on the same journey as you.



Outward Bound Job Taster



Esports Events Management Job Taster



Career conversation and discovery



Details of Admissions Exercises

You can find the details of the various admissions exercises from the **Post-Secondary Admissions Exercises booklet** that can be downloaded from:

<https://www.moe.gov.sg/post-secondary/admissions>

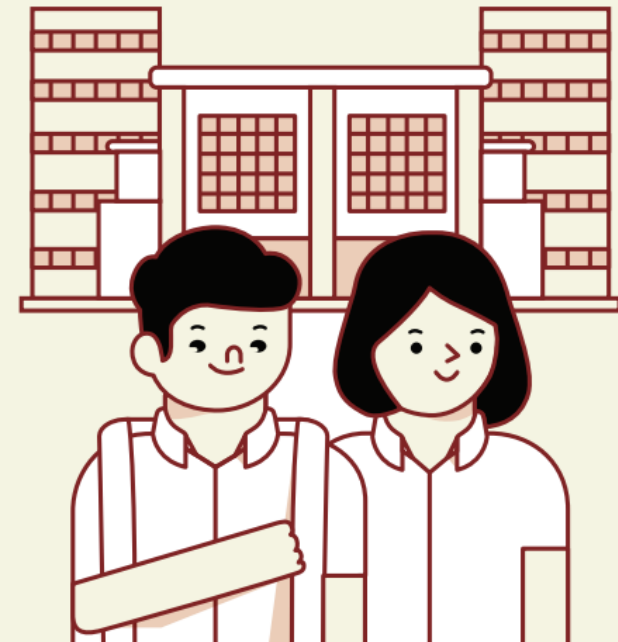
- JAE
- JIE 'O'
- LASALLE
- NAFA



A Guide to

Post-Secondary Admissions Exercises

The various pathways you could explore after secondary school that provide opportunities for continuous learning



Ministry of Education
SINGAPORE

Riverside Alumni.!

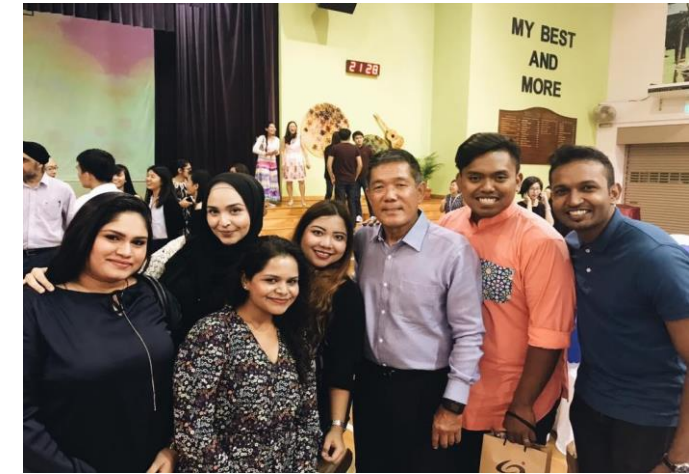




Riverside Alumni Day (RAD)



Career Talk April 2021



30th Anniversary



Class of 2005 at Homecoming!

Opportunities for Alumni to get-together, network and revisit our Riverside memories..



Speech Day 2019 (Alumni Sustained Achievement Award)

.. All while contributing back to the school and the community!

Register today!

To stay connected to the Riverside family and receive updates on latest news and events



rsalumni@live.com.sg



[rsalumniofficial](https://www.instagram.com/rsalumniofficial)



[Riverside Secondary School Alumni \(RSAlumni\)](https://www.facebook.com/RiversideSecondarySchoolAlumni)

Once a Riversidian, Always a Riversidian!

Best of luck in your
future endeavors!

C.M. Punk

